

Open Meeting Tuesday, March 02/10

Southshore Community Centre 7:15 pm

Marion Jarvie's topic is *'So You Think You Know Bulbs'*.

Marion has spoken to our Club on numerous previous occasions & is always entertaining & informative.

She'll present interesting alternatives to get you out

of the tulip & daffodil rut. All you wanted to know about bulbs, but were afraid to ask.

Out and About - Other Events

Oro-Medonte Hort Society meeting Monday, 08 March

Kyla Cotton from the Urban Harvester will talk about preparing the soil, planning & planting a new vegetable garden, inter planting vegetables in existing gardens.

Brereton Field Naturalists meeting Friday, March 12th

at 7:30 pm at North West Barrie United Church

(NWBUC) held at 464 Ferndale Drive North. Evening's topic is 'Antarctic & the South Seas', presented by Kevin Shackleton of West Humber Naturalists.

Toronto Botanical Garden, 777 Lawrence Avenue East

(Lawrence & Leslie), Tuesday March 30th at 7:30 pm

presents Marjorie Harris speaking on 'Re-Envisioning Your Garden'. Tickets \$20.00



Canada Blooms Bus Tour

The bus is leaving - on **Thursday, 18 March 2010**.

WHERE: back of the Kozlov Mall (near entrance of the grocery store)

WHEN: assemble around 8:30 am, departure by 9:00 am

WHAT: tickets to the show will be distributed on the bus

RETURNING: we will leave the show from the designated meeting spot at 5:00 pm

Unpaid for seats will not be held after Tues, 02 March

I Say Pa-to-toe, You Say Pa-ta-tuh

Here's a short quiz to while away a winter afternoon, when you're not perusing seed catalogues. See how much you know about the staple - potatoes. Answers are either true or false.

Q1. Potatoes are native to Ireland - T OR F?

Q2. Potatoes were introduced in Spain & spread through Europe during the 16th century - T OR F?

Q3. China produces more potatoes than any other country - T OR F?

Q4. Sweet potatoes & yams are varieties of potatoes - T OR F?

Q5. Most of the vitamins in potatoes are in the skin - T OR F?

Q6. Most home gardeners practise tissue culture to grow potatoes - T OR F?

Q7. Harvest potatoes after the frost killing frost - T OR F?

Q8. Potatoes left in storage will start to grow new roots from the eyes - T OR F?

Q9. Potatoe tubers are roots - T OR F?

Q10. You have to dig deep to harvest potatoes - T OR F?

Answers available at the next open meeting or on BGC website - check there to determine your score.



Annual Spring Gardening Seminar

Save the date of **Saturday, 17 April 2010.**

Being held at the Kempfenfelt Centre.

8:30 am - 3:30 pm

Featuring the following fabulous speakers:

Charlie Dobbin (of HGTV fame)

Walter Cracknell

Diane Greenfield

Tickets \$40.00 members

\$45.00 non-members

Available at the March Open Meeting

Gardening Myth Debunked

Myth: Cover newly pruned areas with varnish, tar, or paint.

Truth: There really isn't a way to keep fungal organisms out of a new cut. In about half of the situations where these wound dressings are used the tree's heartwood decays faster than it would have without the topical application. The paint or tar holds moisture near the new wound, which unfortunately, helps the various fungal decay organisms grow. Instead, simply make a clean cut just outside the branch collar and leave it alone. If pruned properly, trees can take advantage of natural defence mechanisms to ward off most decay problems.

We have nothing to fear, except fear itself

Apiphobia = fear of bees

Anthophobia = fear of flowers

Arachnophobia = fear of spiders

Bufofobia = fear of toads

Dendrophobia = fear of trees

Entomophobia = fear of insects

Mottephobia = fear of moths

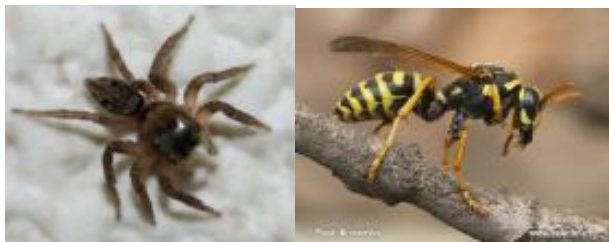
Myrmecophobia = fear of ants

Ranidaphobia = fear of frogs

Rupophobia = fear of dirt

Scoleciphobia = fear of worms

Spheksophobia = fear of wasps



Trees

I think that I shall never see

A poem lovely as a tree.

A tree whose hungry mouth is pressed
Against the Earth's sweet flowing breast;

A tree that looks at God all day,
And lifts her leafy arms to pray;

A tree that may in Summer wear
A nest of robins in her hair;

Upon whose bosom snow has lain;
Who intimately lives with rain.

Poems are made by fools like me,
But only God can make a tree.

Joyce Kilmer (1886 - 1918)

Everyone knows the best time to plant a tree was twenty years ago, but the second best time is NOW. Lots of good reasons to plant a tree - to celebrate the birth of a new family member, or the death of a loved one, or a significant event such as retirement - anything that creates a memory you want to keep alive. Go to the Tree Atlas in the link provided & learn which species are best suited to your location & site conditions.

<http://www.mnr.gov.on.ca/en/>



The Last Word

To own a bit of ground, to scratch it with a hoe,
to plant seeds, and watch the renewal of life -
this is the commonest delight of the race, the
satisfactory thing a man can do.

Charles Dudley Warner (1829 - 1900)